

# "Jagdpanther"

Janusz Ledwoch



Militaria in detail

Wydawnictwo  
Militaria

4

Text by Janusz Ledwoch

Photographs – Jacek Nowicki, Wojciech J. Gawrych,  
Marcin Jędrzejewski

Colour drawing Grzegorz Jackowski

Drawing Hilary L. Doyle

**Wszelkie prawa zastrzeżone. Żadna część tej książki nie może być kopiowana w żadnej formie ani żadnymi metodami mechanicznymi, ani elektronicznymi, łącznie z wykorzystaniem systemów przechowywania i odtwarzania informacji bez pisemnej zgody właściciela praw autorskich. Układ graficzny strony tytułowej i liternictwo prawnie zastrzeżone. Znak wydawnictwa i nazwa prawnie zastrzeżona.**

*All rights reserved. No part of this book may be reproduced or transmitted in any form or by any means, electronic or mechanical, including photocopying, recording or any information storage and retrieval system without written permission from copyright owner.*

© Copyright by Wydawnictwo „MILITARIA”<sup>TM</sup>,  
Warszawa 2000

*All rights reserved*

Wydawnictwo „MILITARIA”<sup>TM</sup>  
– 00-961 Warsaw 42 P.O. Box 106  
Poland

tel/fax (24h order service) 48 22 845 14 27, mobile 0 601 217 999  
e mail: [militaria@supermedia.pl](mailto:militaria@supermedia.pl)

ISBN 83-7219-088-7



“Jagdpanther” Musée des Blindés,  
Saumur, France



“Jagdpanther” The Tank Museum,  
Bovington Camp, England



“Jagdpanther” Panzermuseum,  
Münster, Germany,



Panzerbefehlswagen  
“Jagdpanther” Imperial War  
Museum, London, England



**8.8 cm Pak 43 L/71 auf Fgst  
PzKpfw V Sd Kfz 173  
“Jagdpanther” in detail**



Above. A rear view of “Jagdpanther” SP gun preserved at Saymur in France. Below, left. “Jagdpanther”, Tank Museum, Bovington, England. Below, right. A Panzerbefehlswagen “Jagdpanther” command SP gun, Imperial War Museum, London. [MJ, JN]



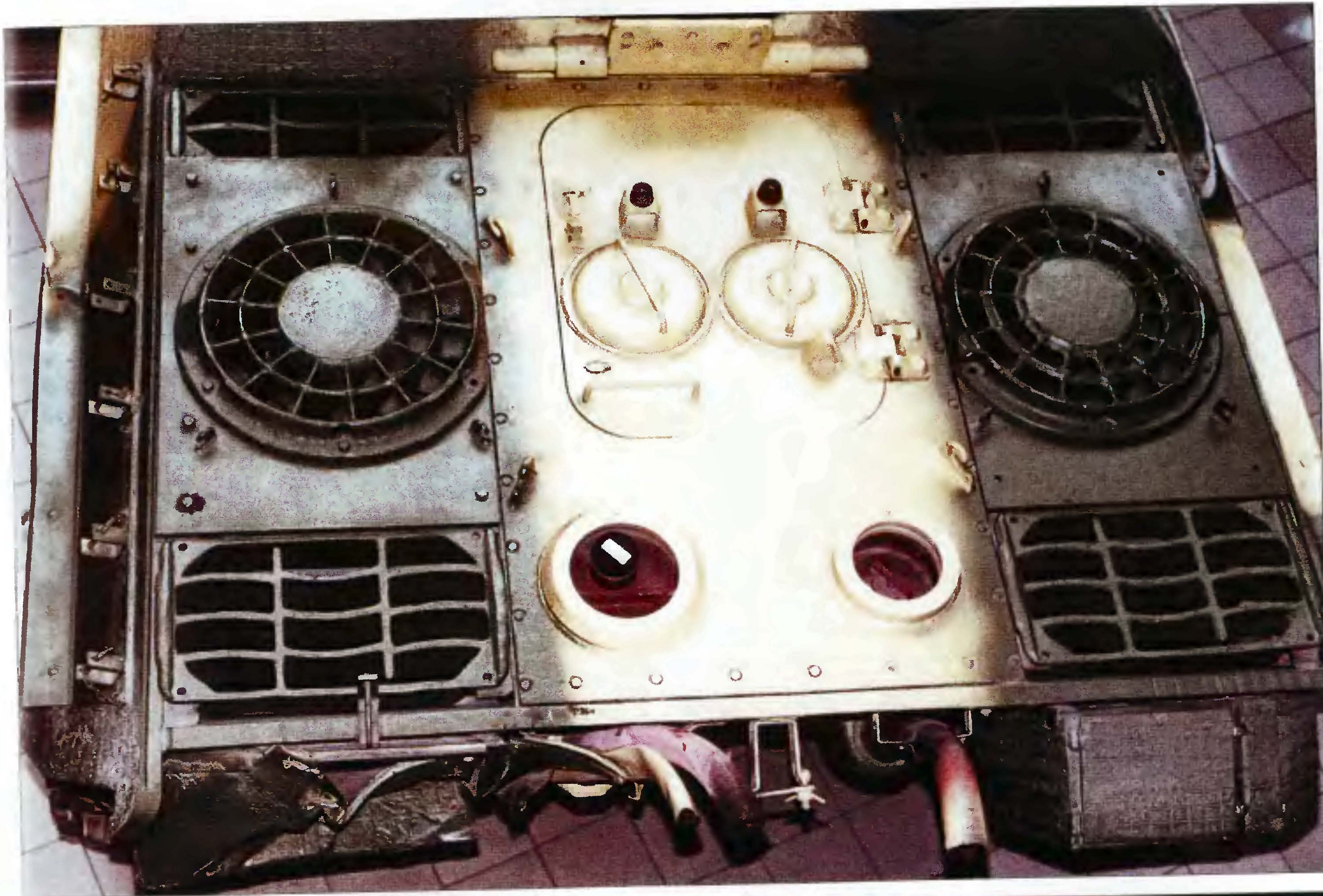


Above. Engine deck. Note engine access hatch and small air outlet near rear armour of superstructure.

Below. Details of escape/loading hatch with rear part of gun breech. Above, right. Details of engine deck and superstructure of Panzerbefehlswagen "Jagdpanther". Note, left an additional aerial mount for FuG 8 radio set for command vehicle.

Below right. A side armour of Panzerbefehlswagen aus "Jagdpanther". Note three penetration in superstructure.





## Engine deck

Above. Engine deck of early production vehicle. Middle engine access hatch with cooling air intakes, two circular air inlet for radiator cooling fan, in the corners air outlet.

Right. Details of air inlet for radiator fan and air outlet.





**Armoured ventilator fan.**



**Commander's  
gunner's hatch.**

## **Superstructure**

**Above.** Roof of fighting compartment superstructure, commander rotating periscope, (left) commander's hatch and gunner's hatch (right). Two aerial mounts for short (FuG 5) and long-range (FuG 8) radio sets.

**Left.** A general top view of superstructure Panzerbefehlswagen "Jagdpanther" command SP gun.



Below. Roof of fighting compartment superstructure, loader's hatch, (left) commander's hatch and gunner's hatch (right). Two aerial mount for short and long-range radio sets.

Left. Opened rear escape/loading hatch.

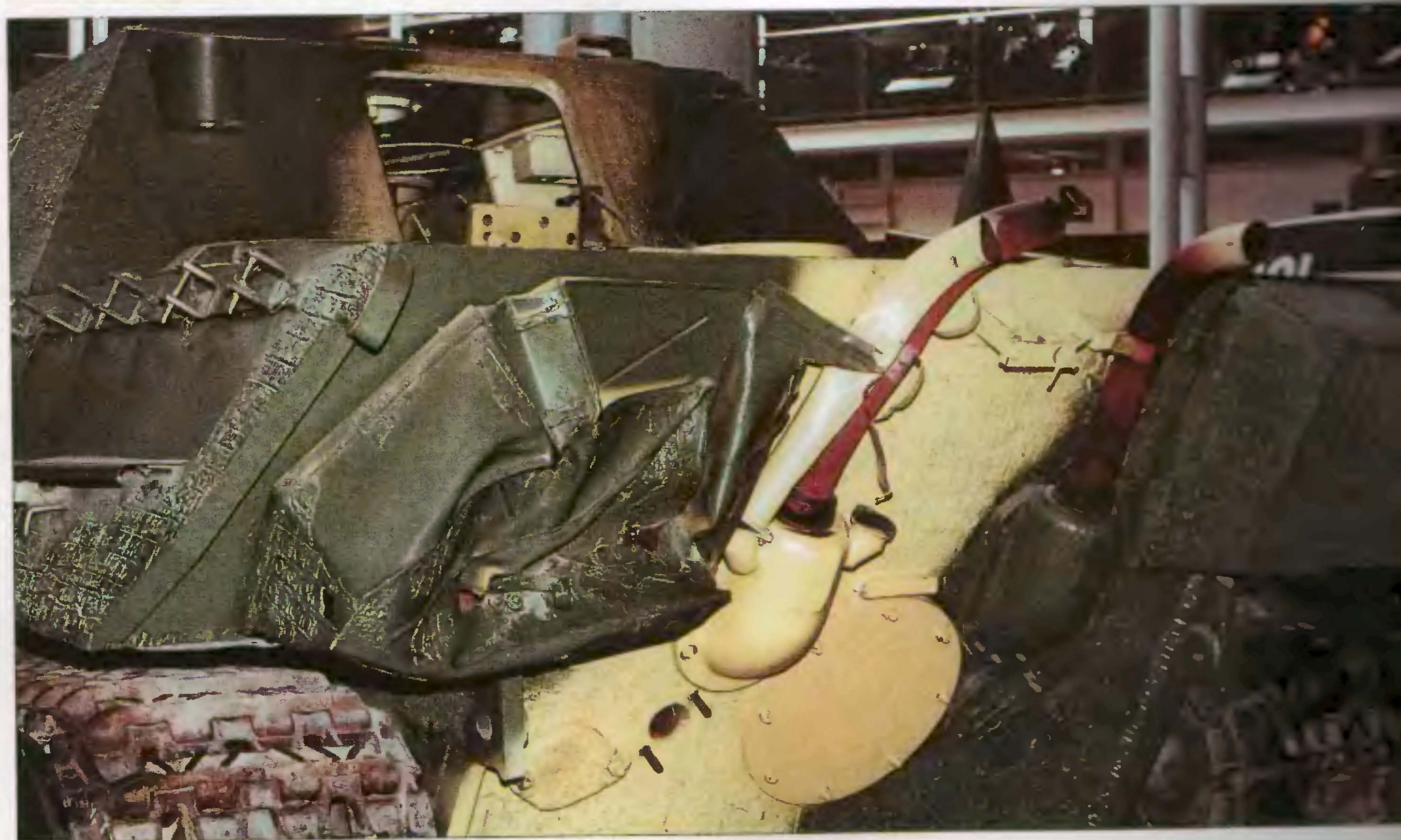
## Rear escape/loading hatch





Left. Details of radiator air inlet and engine deck.  
 Below. Panzerbefehlswagen "Jagdpanther" rear view  
 a damaged stowage bin, exhaust pipes.

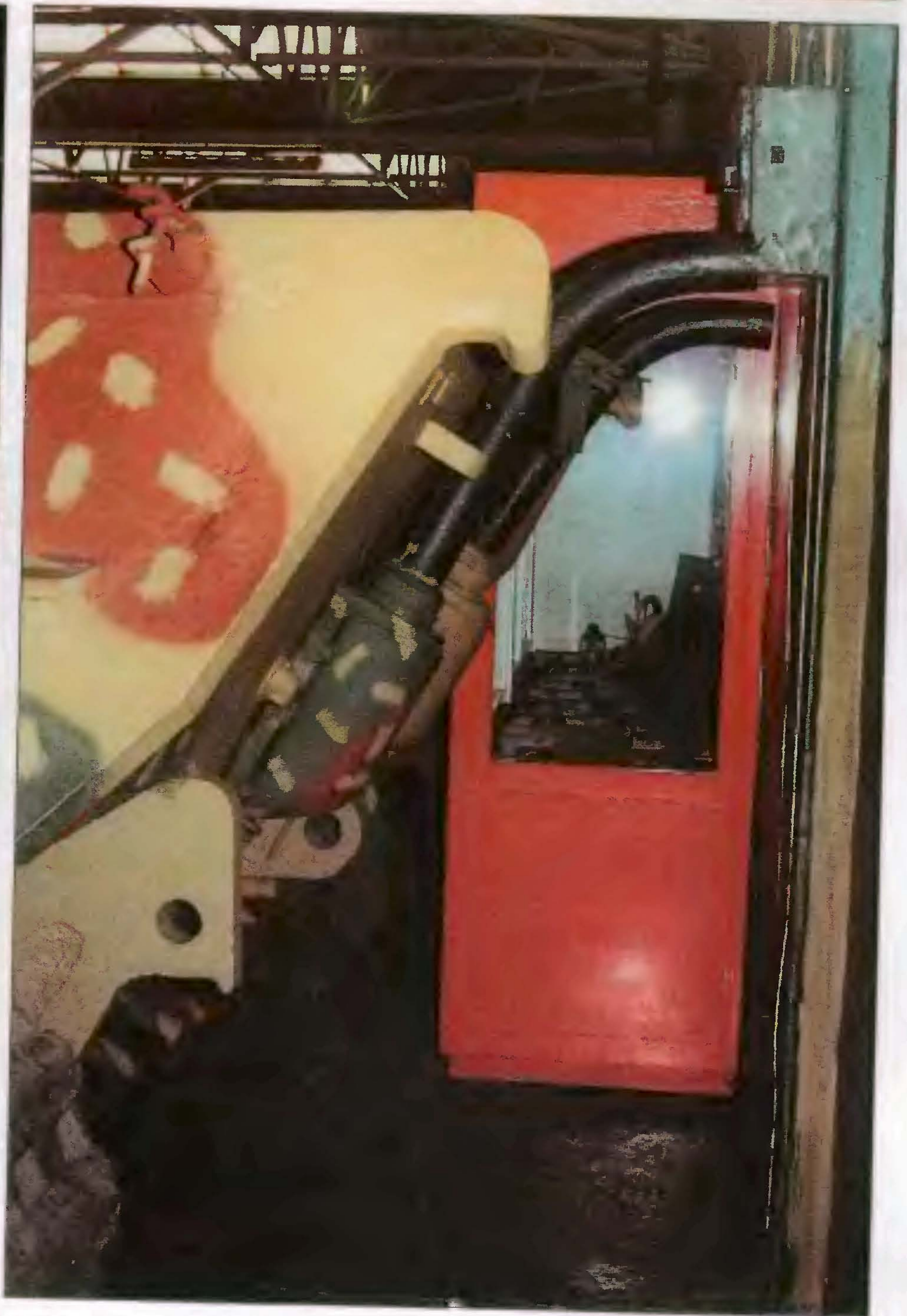
**Exhaust pipes**



**Details of exhaust pipe.** Left. An early production vehicle.

**Right.** A late production vehicle with exhaust muffler cooling air inlet pipe. Note rear towing hooks.

**Top right.** A cast structure of exhaust pipe base.





Hull side with spare track links bracket, note the retaining pin with chain. Below side skirt (schürzem) support on the hull side. Note raised cover for the air intake fan. The high box protected an extra duct to engine section.



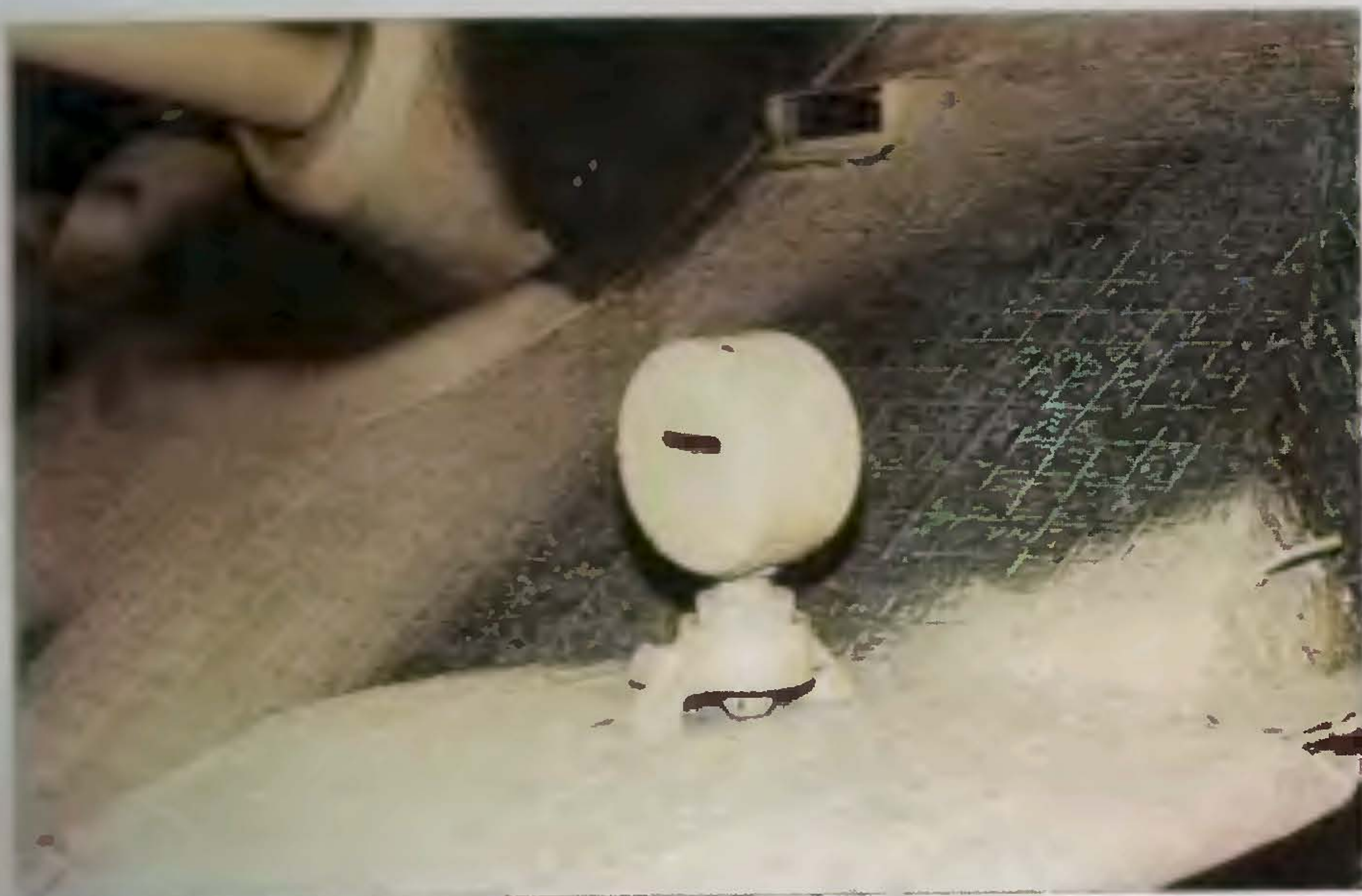
Hull side with spare track links bracket, note the retaining pin with chain. Note a damaged side skirt (schürzem) support.

## Hull details

Below. A details of the starboard side of superstructure side with hexagon wrench for track tension adjustment and hammer bracket and (left) a bracket for wooden jack.



Above. A view of rear armour of superstructure and engine deck. Note on the right a small spent case discharge hatch and above hatch a FuG 5 radio set aerial mount.



Above. A front view of "Jagdpanther" SP gun preserved at Panzermuseum Münster, Germany. [MJ]

Top, left. A Bosch black-out head light fitted on the front mudguard.

Above, left. Monocular driver's periscope with a rain shield.

Left. Details of front mudguard and towing hook.



An early gun mantlet of Panzerbefehlswagen "Jagdpanther", Imperial War Museum, London. Note 8.8 cm Pak 43/2 gun and monocular driver's periscope with a special rain shield.



A bolted gun mount collar and a late mantlet of "Jagdpanther" Tank Museum Bovington. Note 8.8 cm Pak 43/3 gun and monocular driver's periscope without rain shield. [JN]



## 8.8 cm Pak 43 L/71 gun and MG 34 bow machine gun

Above. A late gun mantlet of "Jagdpanther", Tank Museum Bovington. Note 8.8 cm Pak 43/3 gun and monocular driver's periscope without rain shield. On mudguard is a Bosch front light. [JN]

Right and above right. Bow MG 34 machine gun mount.





Above. Double muzzle brake.

Right. Gun mantlet.



Below. "Jagdpanther", Tank Museum, Bovington Camp, England  
– side view. [JN]





Above. A “Jagdpanther” SP gun preserved at the Musée des Blindés, Saymur, France. [MJ]

Below, right. A “Jagdpanther” SP gun at the Panzermuseum Münster, Germany. [MJ]

**Walk around**





Left. Drive sprocket, road wheels.  
Below. Road wheels and Kgs 64/660/160 track links with six  
chevroned cleats.

## Drive sprocket and road wheels





## Track and drive sprocket

Above and right. Road wheels and Kgs 64/660/160 track links. Drive sprocket, details of track link with manufacture's code on the track.

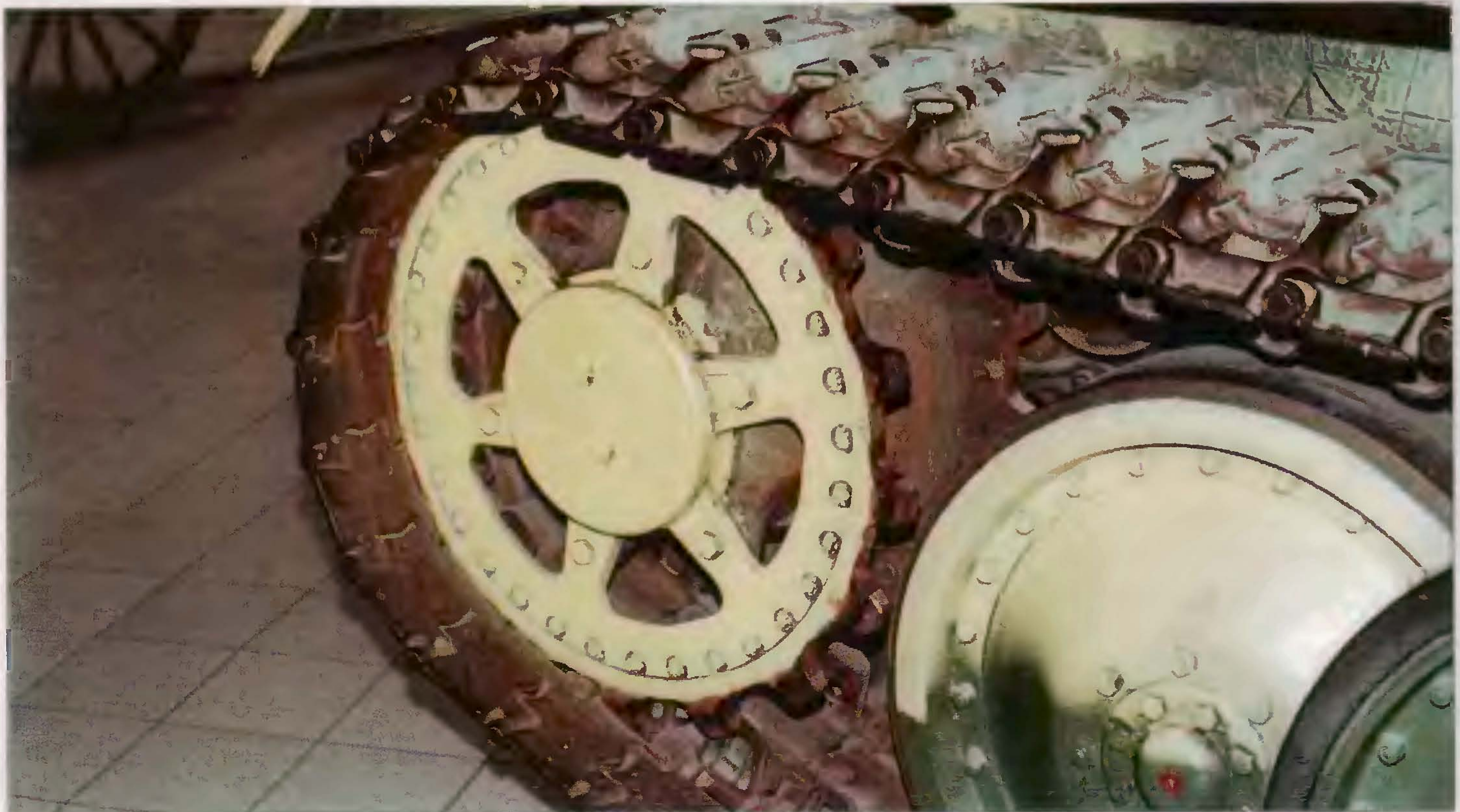




Left and right.  
Details of idler  
wheel.

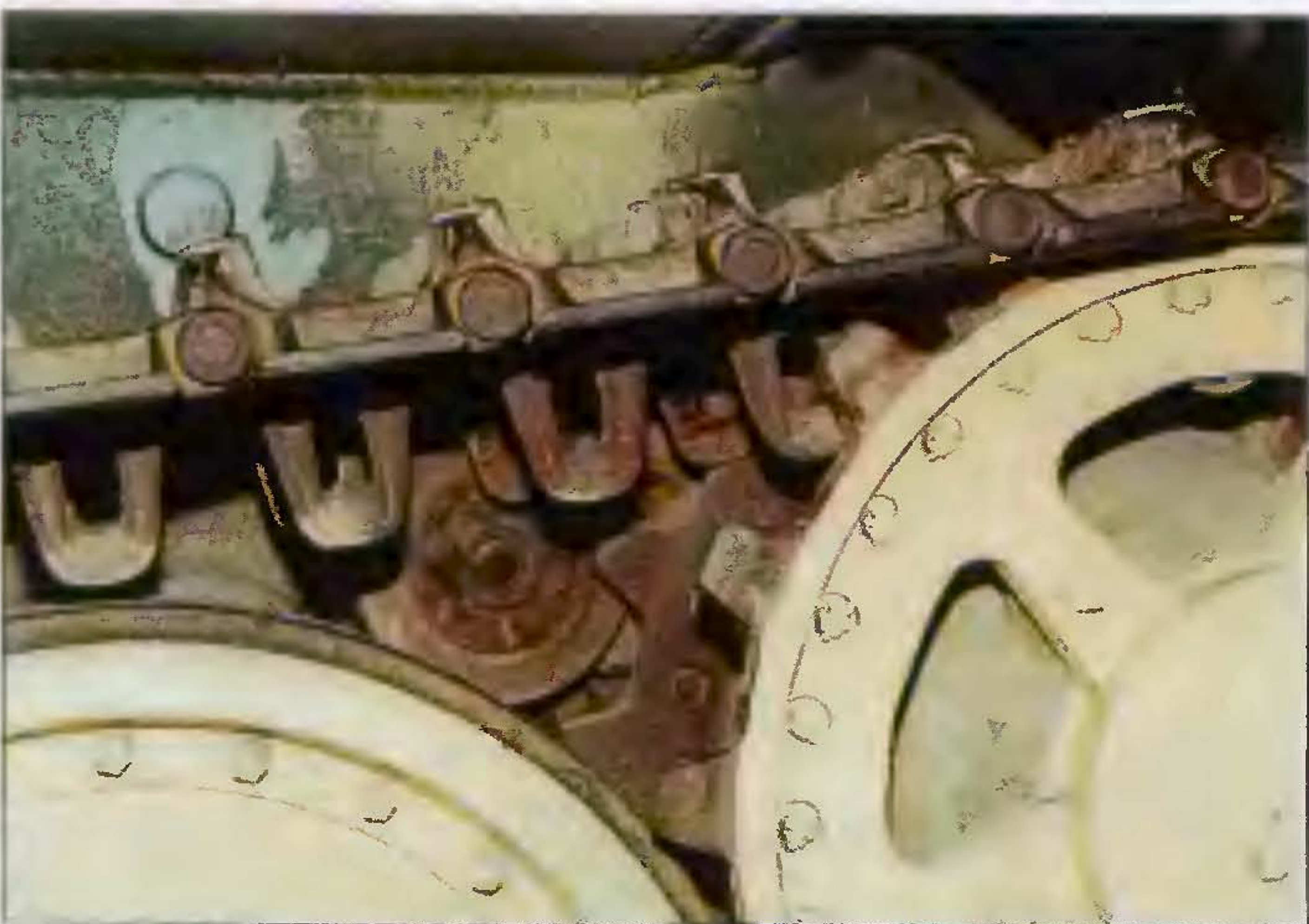
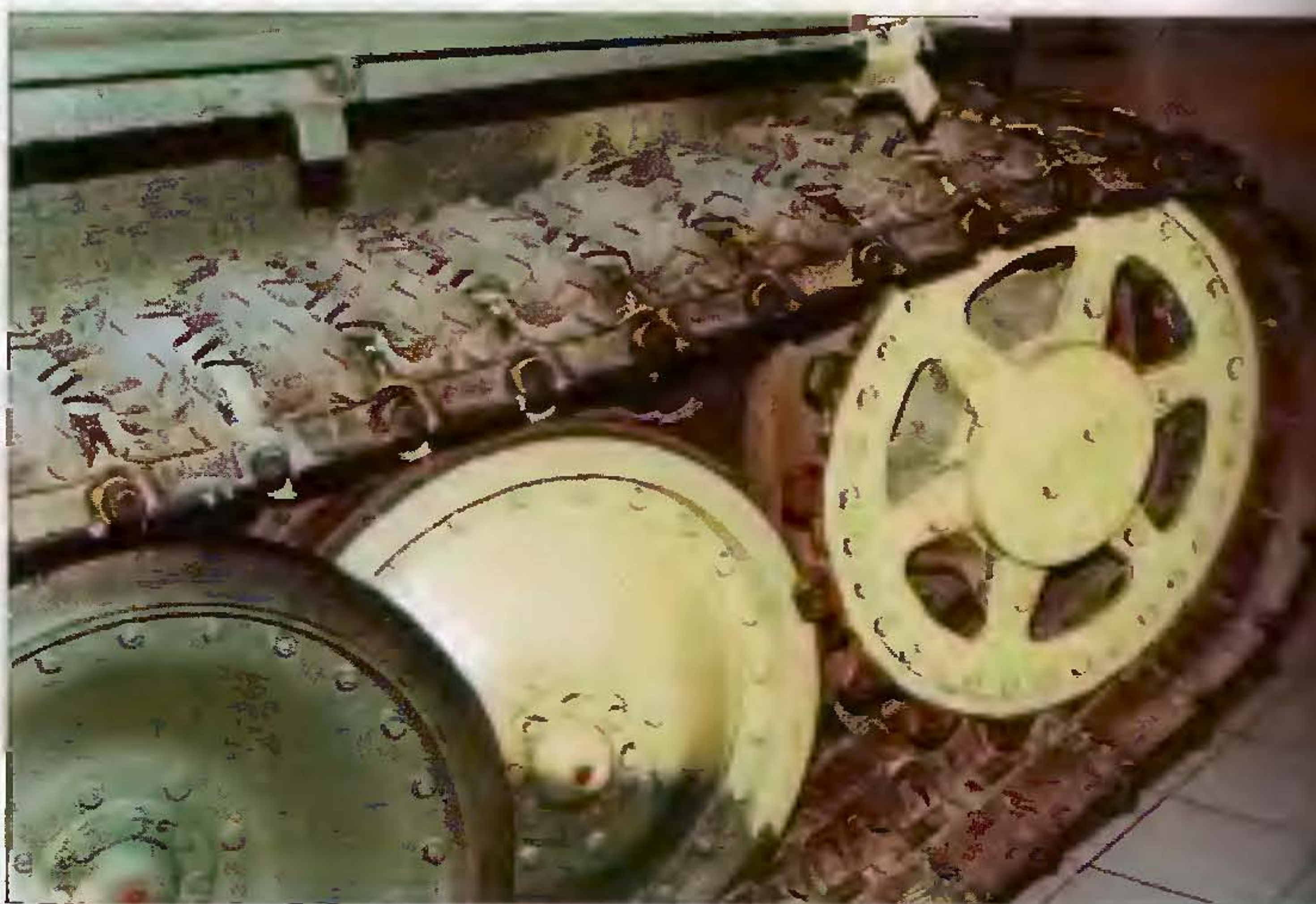


Below. The drive sprocket and a road wheel





**Above and top right. Details of idler wheel.  
Right. The drive sprocket and a road wheel.**



**Left. A small return roller beside sprocket wheel.**



Left. A track link with road wheel.

Left, below. Two photos of chassis of "Jagdpanther" SP gun, Tank Museum, Bovington. [JN]



Below. Road wheels and Kgs 64/660/160 track links.

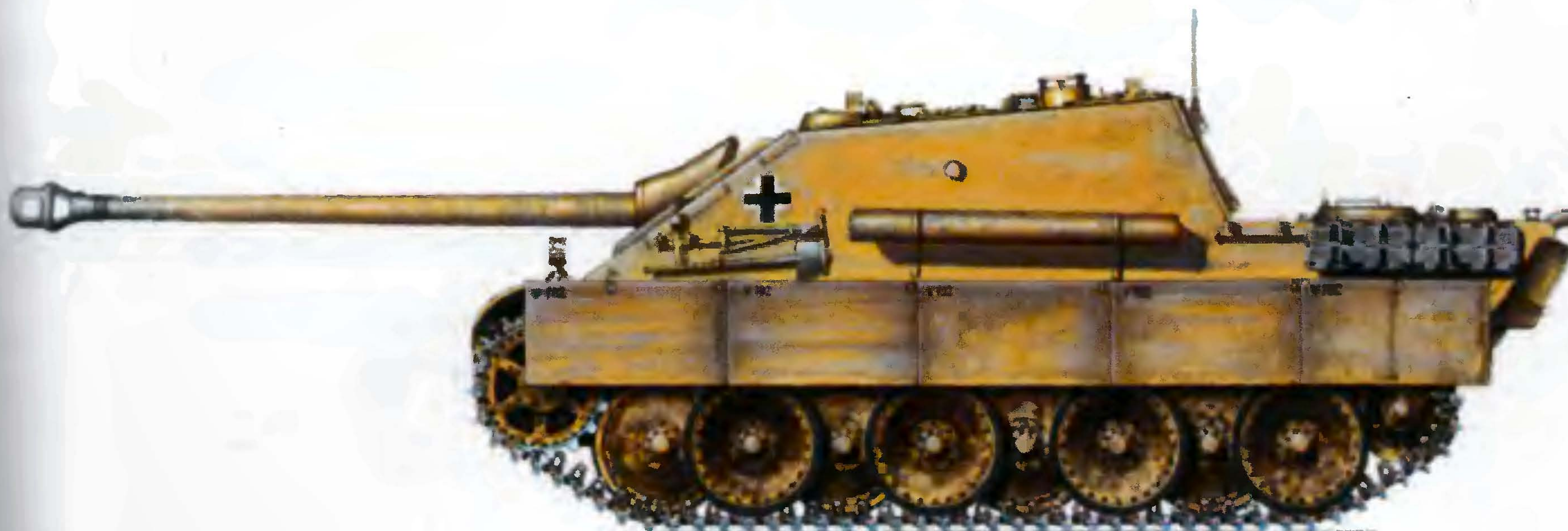




Panzerjäger für 8.8 cm Pak 43 auf Fgst PzKpfw V "Jagdpanther" Sd Kfz 173, unit unidentified, Germany, Spring 1945.



Panzerjäger für 8.8 cm Pak 43 auf Fgst PzKpfw V "Jagdpanther" Sd Kfz 173 of 654th schwere Heeres Panzerjäger Abteilung, France, end 1944.



Top. Panzerbefehlswagen "Jagdpanther" Sd Kfz 173 of 559th schwere Heeres Panzerjäger Abteilung, Belgium, September 1944.  
 A prototype of Panzerjäger für 8.8 cm Pak 43 auf Fgst PzKpfw V "Jagdpanther" Sd Kfz 173 Fahrgestell V 102, Kummersdorf, Germany, January 1944.



Panzerjäger für 8.8 cm Pak 43 auf Fgst PzKpfw V "Jagdpanther" Sd Kfz 173 of 507th schwere Heeres Panzer Abteilung, Germany, Spring 1945.



Panzerjäger für 8.8 cm Pak 43 auf Fgst PzKpfw V "Jagdpanther" Sd Kfz 173 of 654th schwere Heeres Panzerjäger Abteilung, France, end 1944.



Panzerjäger für 8.8 cm Pak 43 auf Fgst PzKpfw V "Jagdpanther" Sd Kfz 173 of 654th schwere Heeres Panzerjäger Abteilung, France, end 1944.



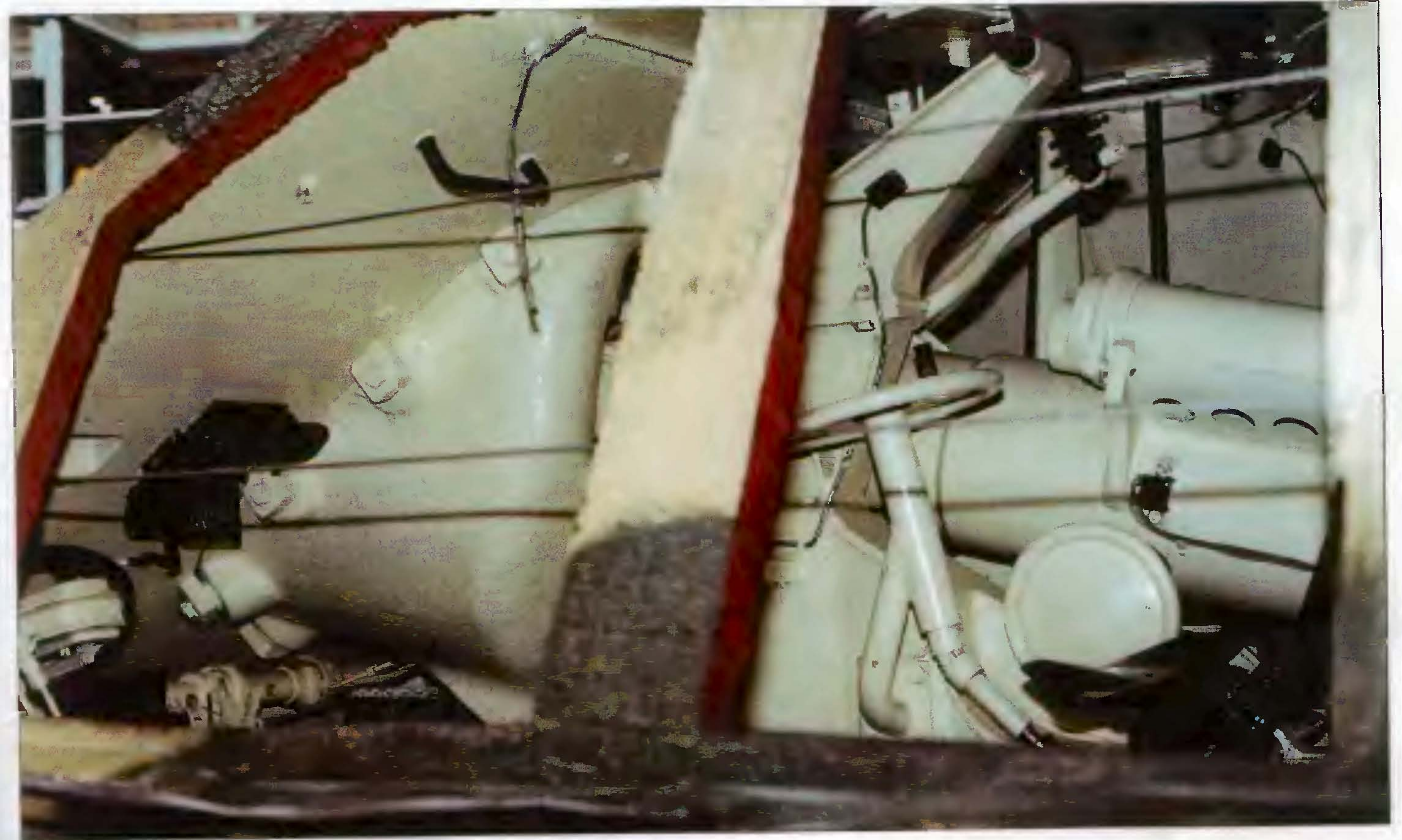
Panzerjäger für 8.8 cm Pak 43 auf Fgst PzKpfw V "Jagdpanther" Sd Kfz 173 of 2nd Company of 654th schwere Heeres Panzerjäger Abteilung, Mailly-le-Camp proving ground, Spring 1944.



Panzerjäger für 8.8 cm Pak 43 auf Fgst PzKpfw V "Jagdpanther" Sd Kfz 173, unit unidentified, France, end 1944.



Panzerjäger für 8.8 cm Pak 43 auf Fgst PzKpfw V "Jagdpanther" Sd Kfz 173, unit unidentified, Germany, Spring 1945.



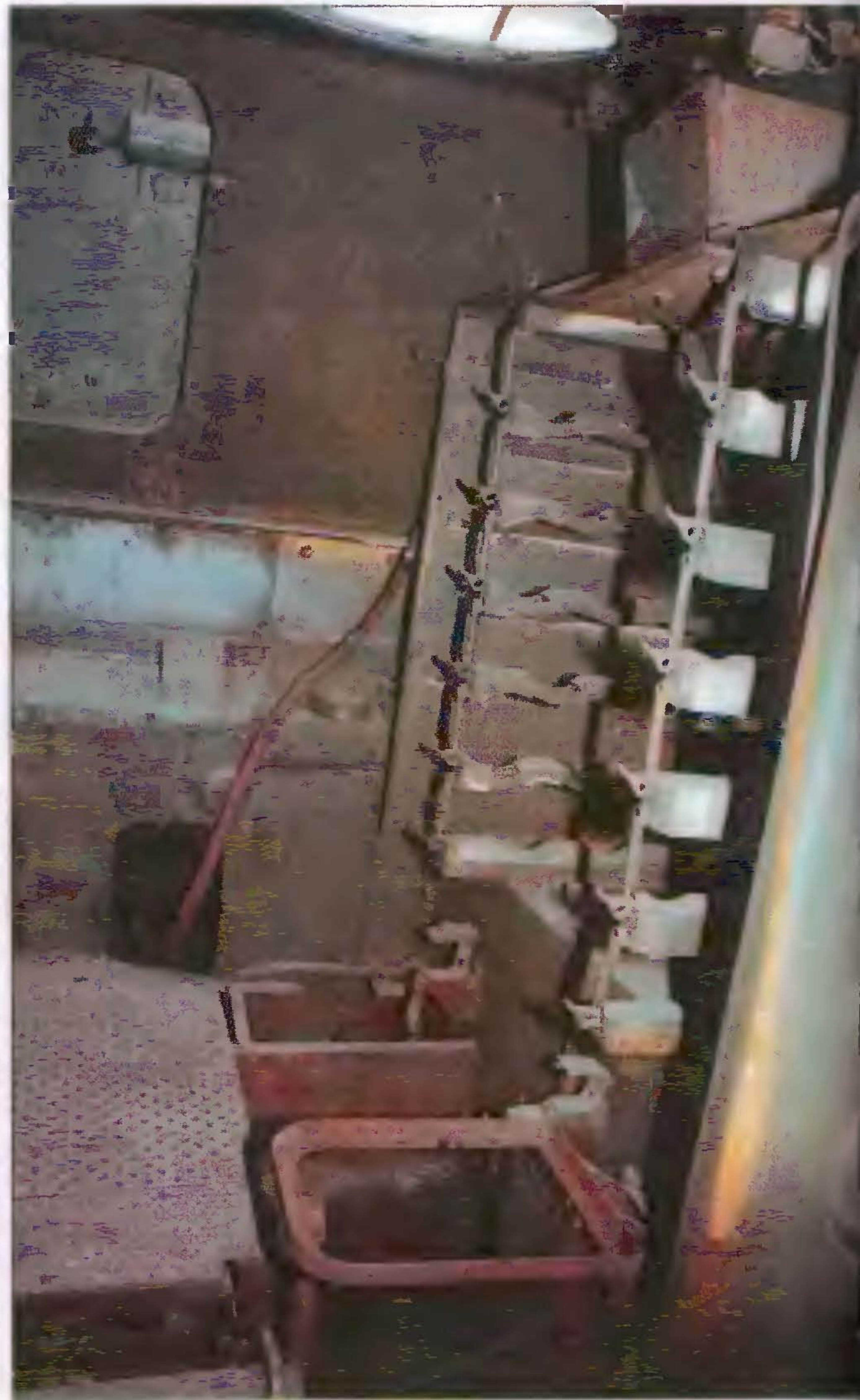
## Interior of fighting compartment



Above and left. Interior of the fighting compartment of Panzerbefehlswagen "Jagdpanther", Imperial War Museum, London.



Driver's position, left to right, hand brake, steering lever (grip is below), accelerator, clutch, foot brake pedal (almost hidden). [WJG]

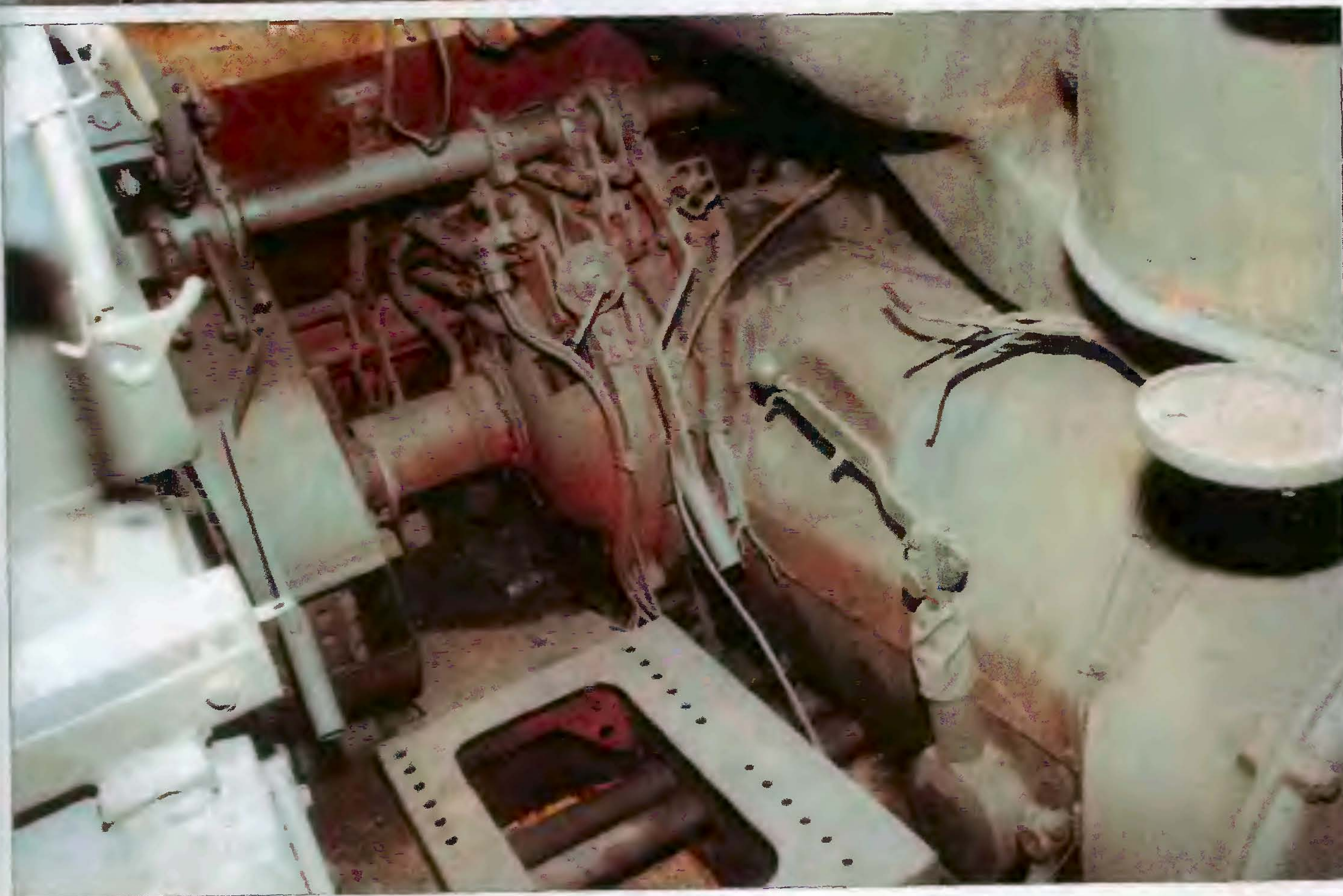


Rear left corner of the fighting compartment. Note racks and rear escape/loading hatch. [WJG]



Left. Rear armour of superstructure with escape/loading hatch. Centre 8.8 cm Pak 43/2 L/71 gun. [WJG]

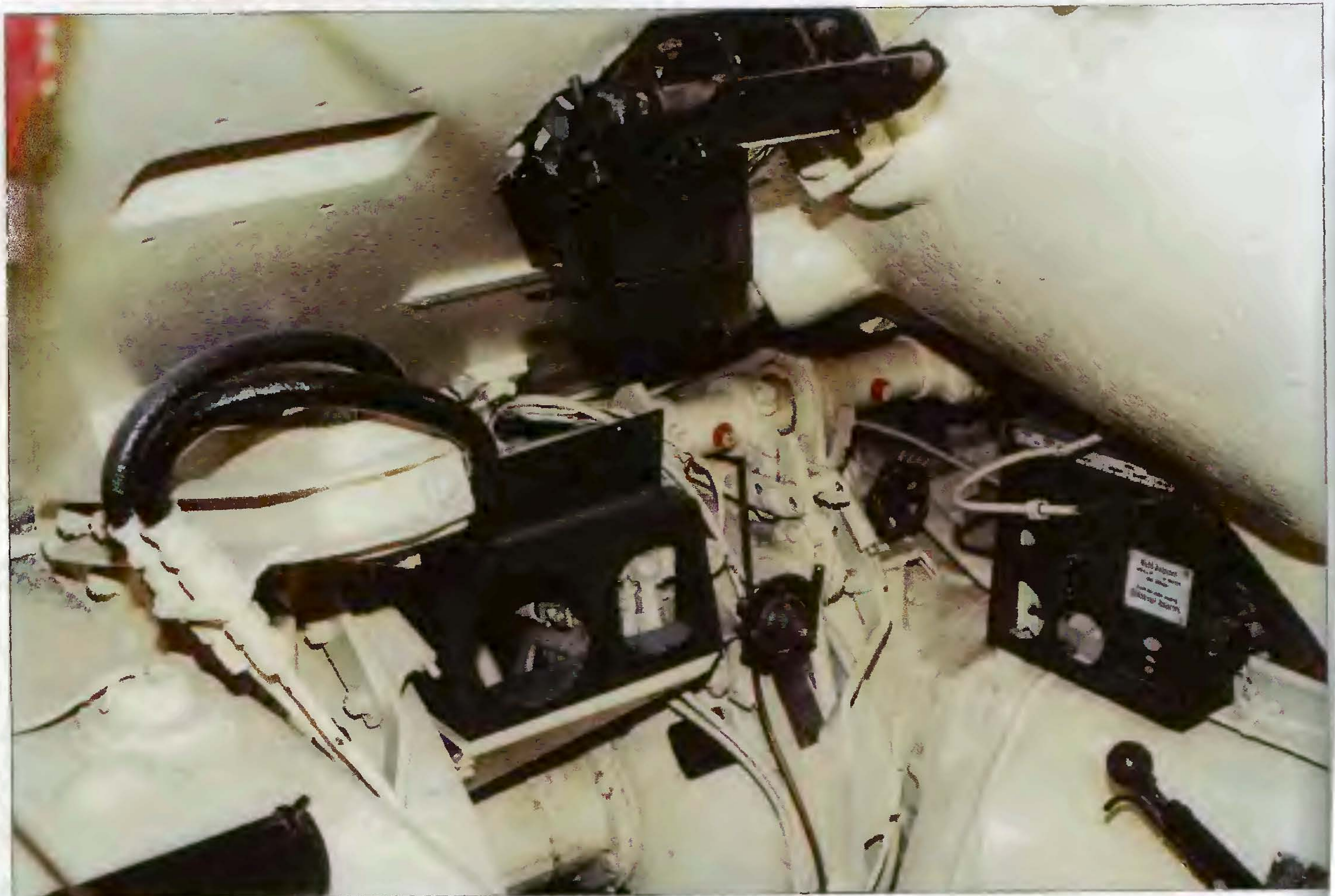
Below. Driver's position, left to right, hand brake, steering lever (grip is below), accelerator, clutch, foot brake pedal (almost hidden). Right gear box with gear lever on driver's right. In the foreground is a driver's seat base. [WJG]

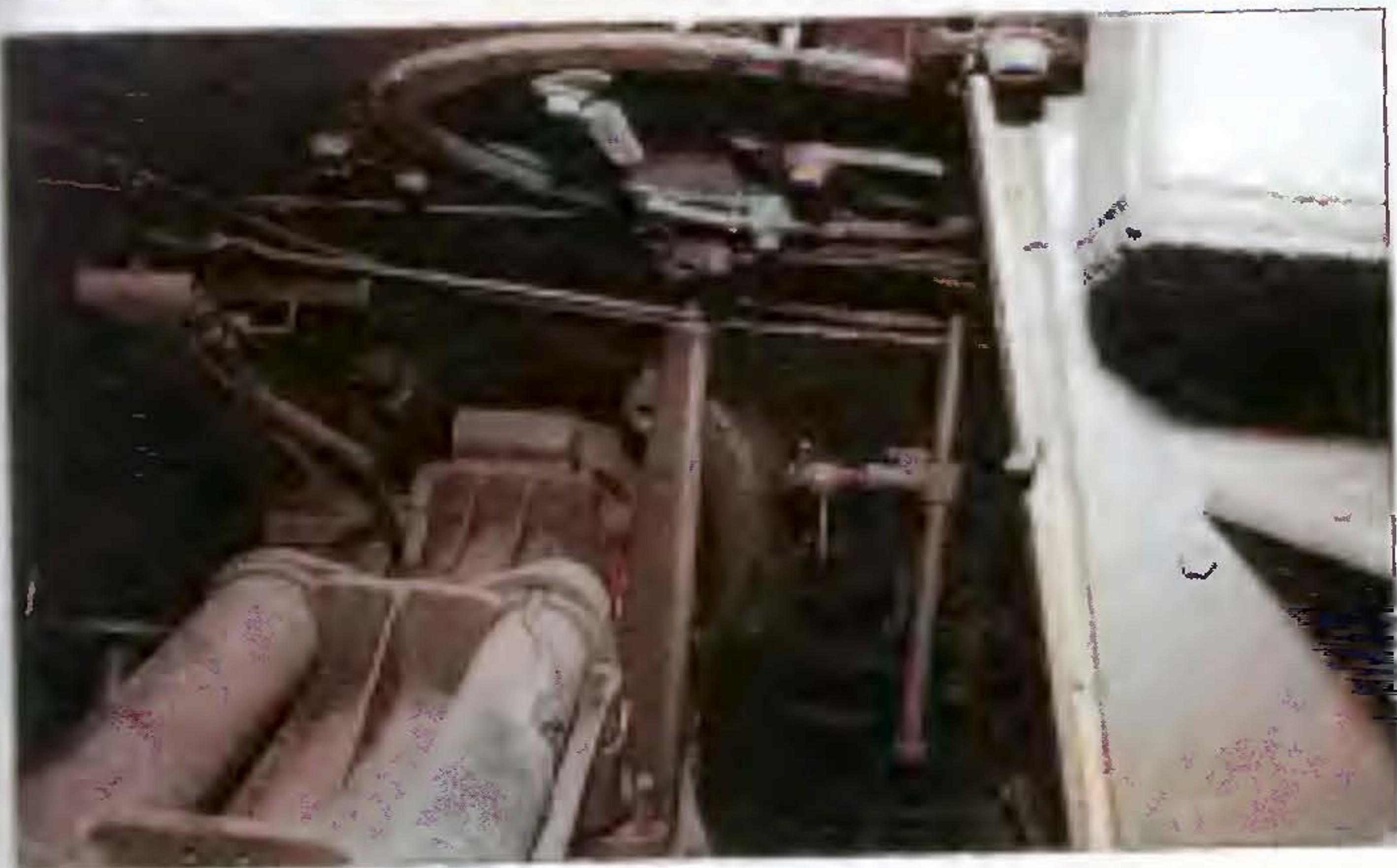
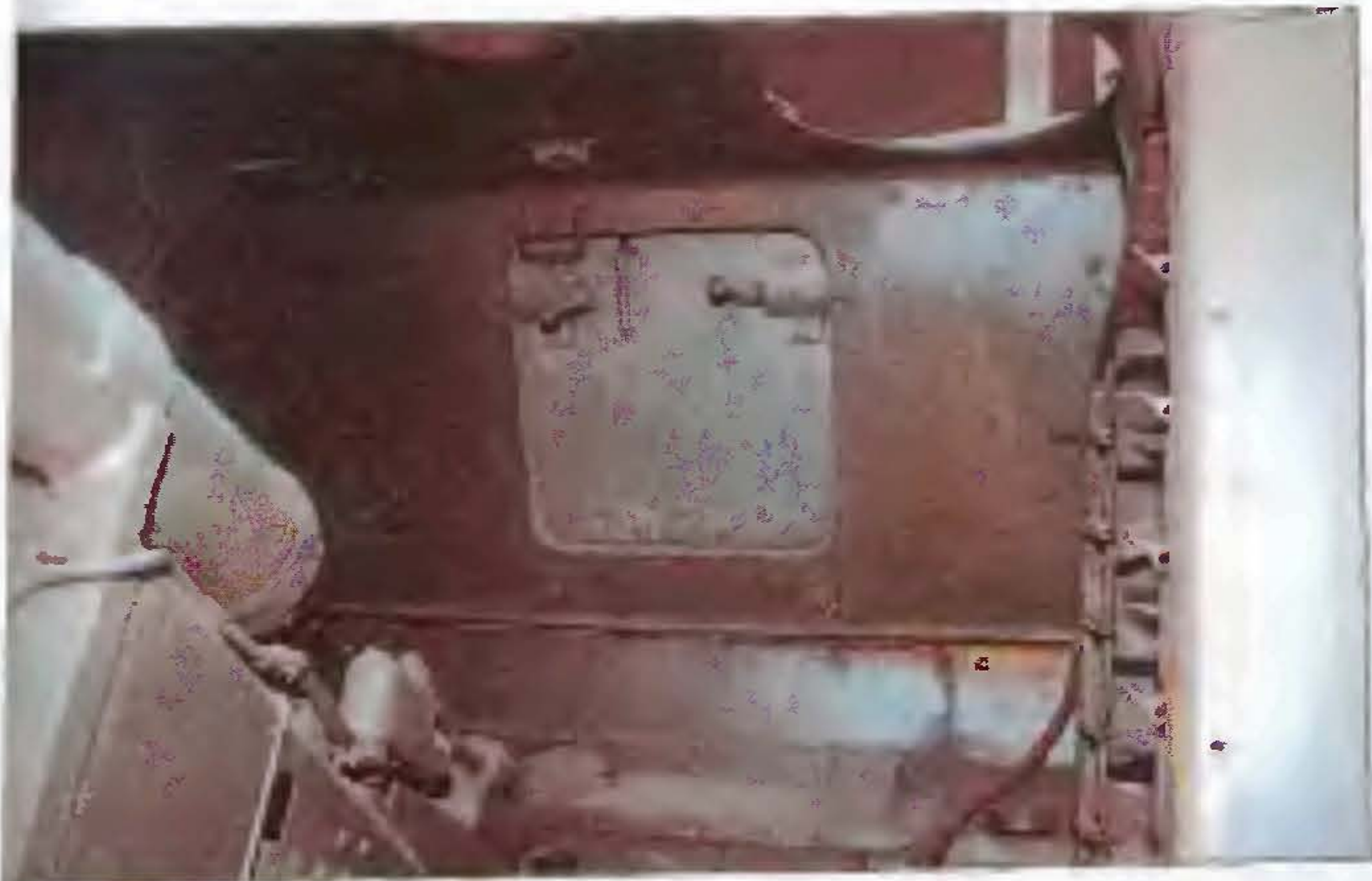




Left. Machine gunner/Radio operator's position. [WJG]

Below. Driver's position. Driver's visor with a operating lever for the armoured hatch, front instrumental panel and right panel. Below is a gear lever.



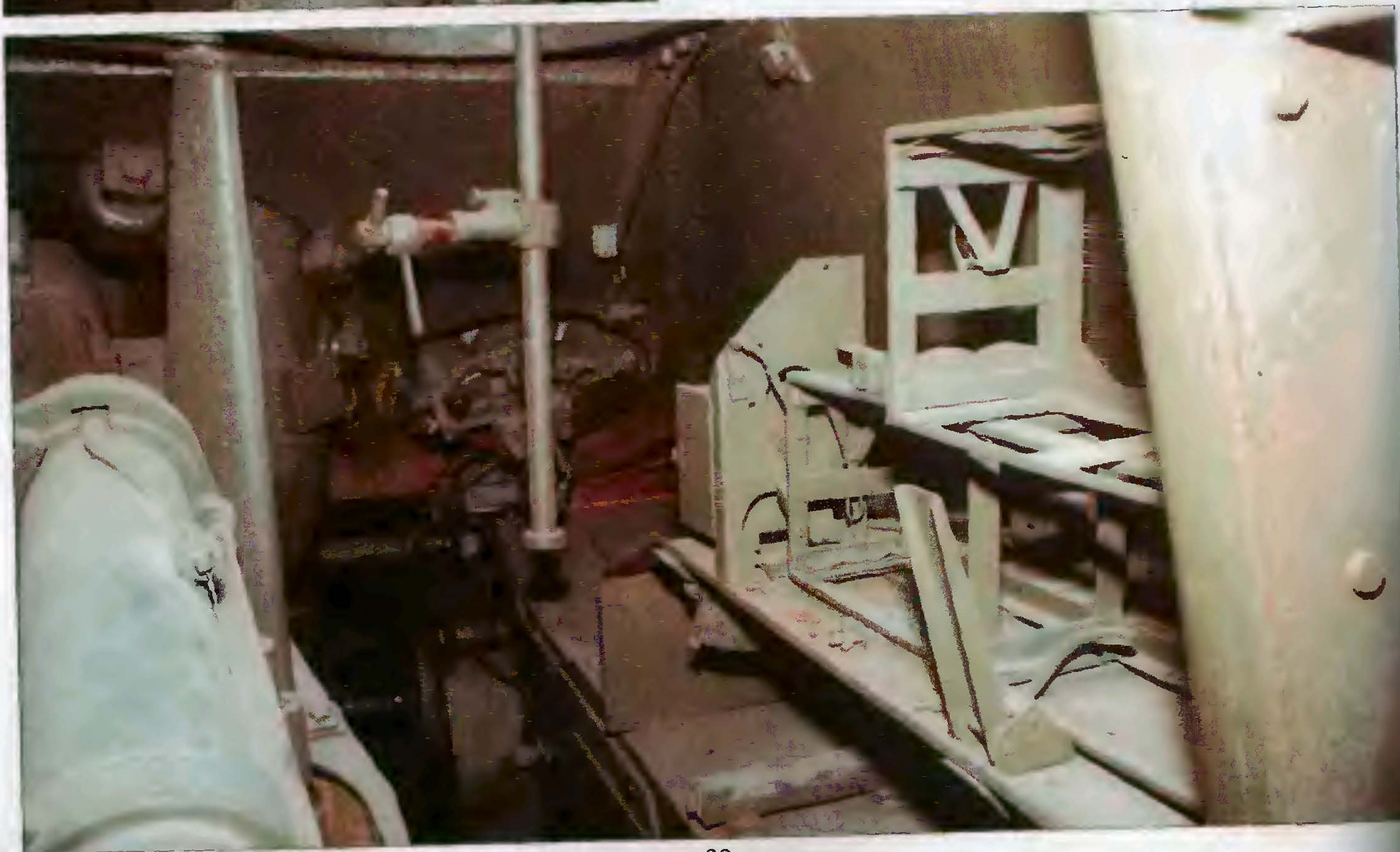


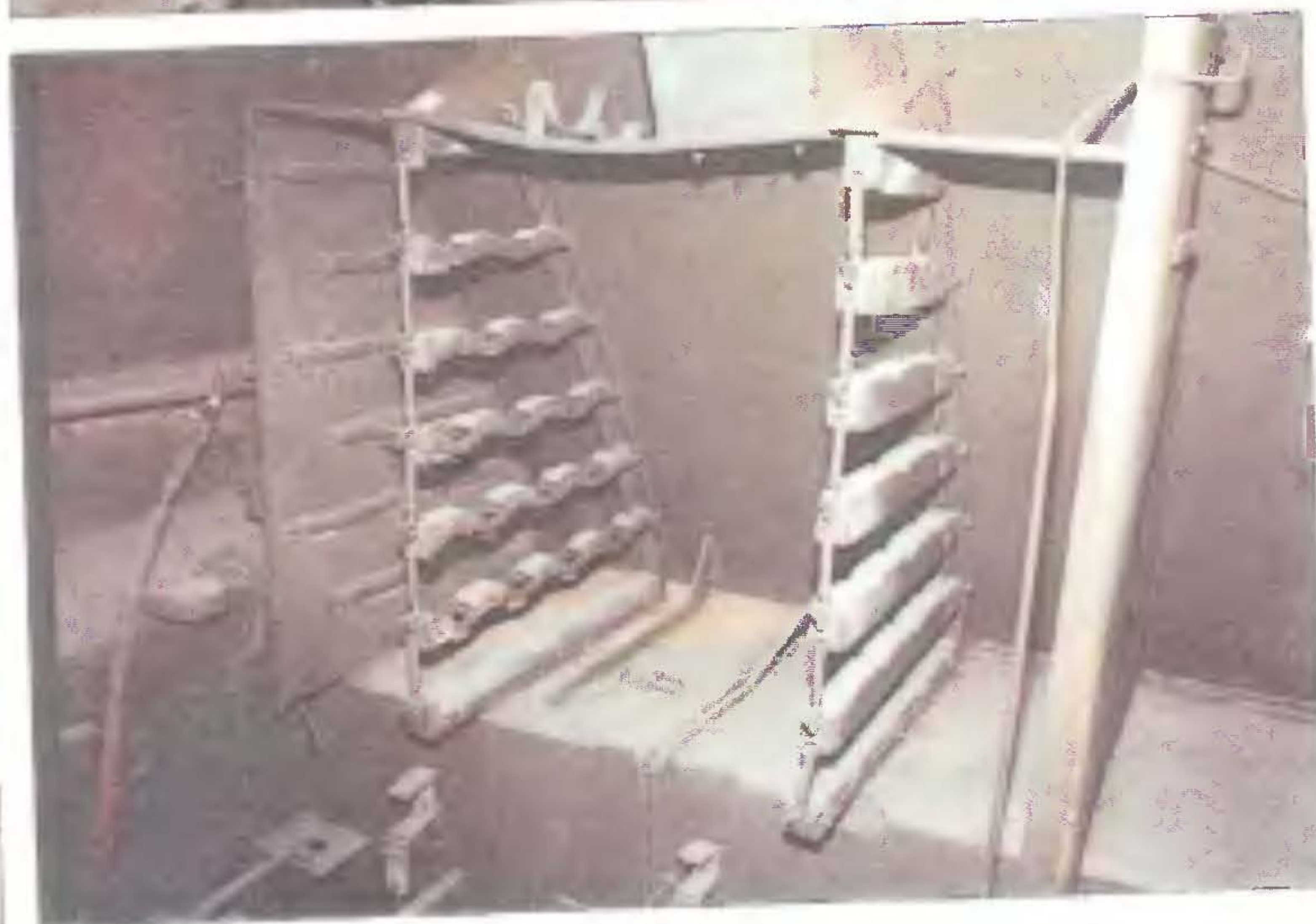
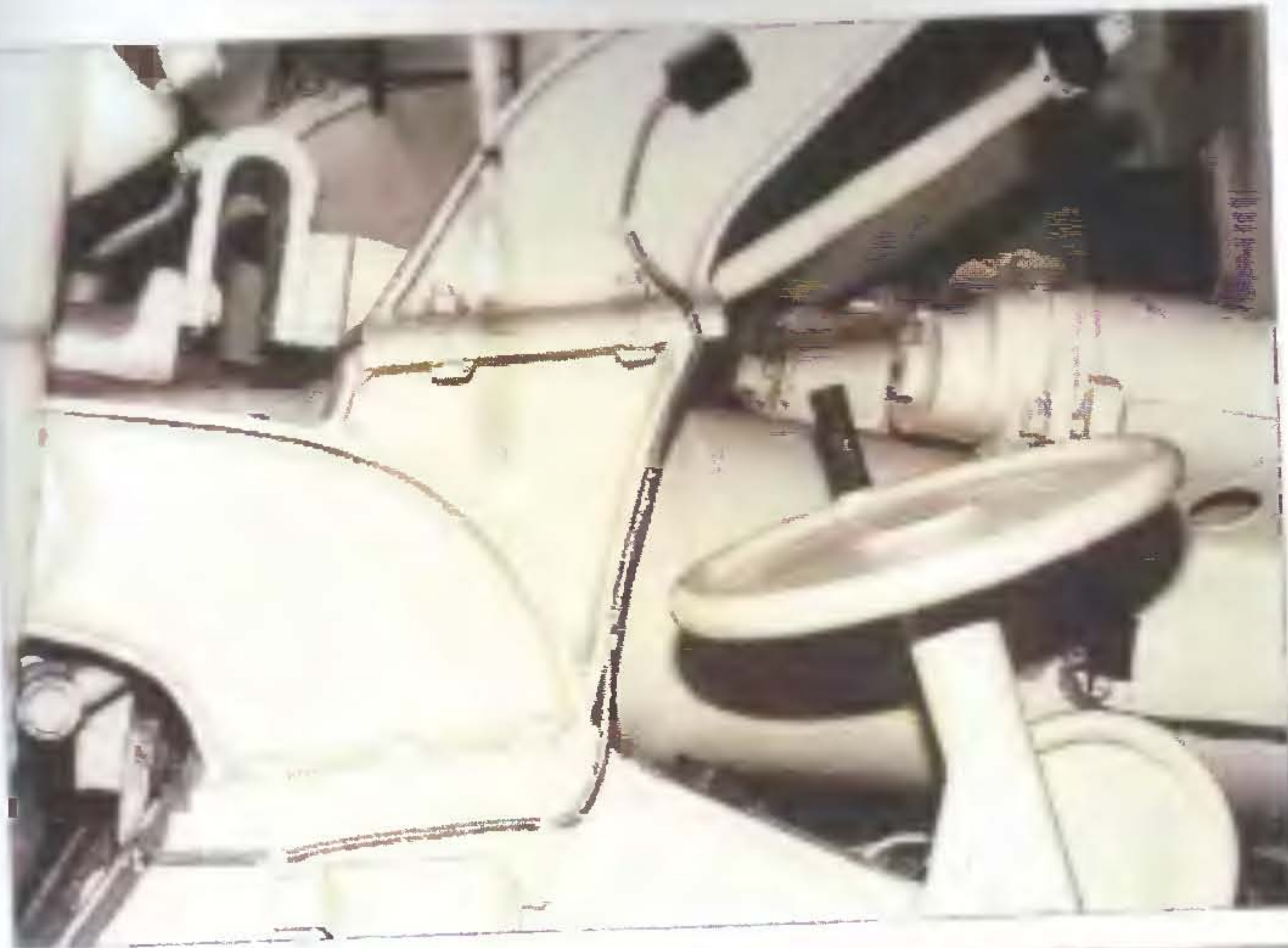
**Top, left. Rear of fighting compartment. [WJG]**  
**Left, middle. The 8.8 Pak 43/2 L/71 gun mount. [WJG]**  
**Left. A view of front part of fighting compartment. [WJG]**  
**Above, top. Gun mount and a view of floor of fighting compartment, [WJG]**  
**Above. A gunner's position and gun mount. [WJG]**



**Left. Recoil equipment of 8.8 Pak 43/2 L/71 gun. [WJG]**

**Below. Machine-gunner/Radio-operator's position, left to right, gun, MG 34 machine-gun mount. In front of operator's seat is final drive gear. Right hand a base for transmitter and ereceiver of FuG 5 radio set [WJG]**





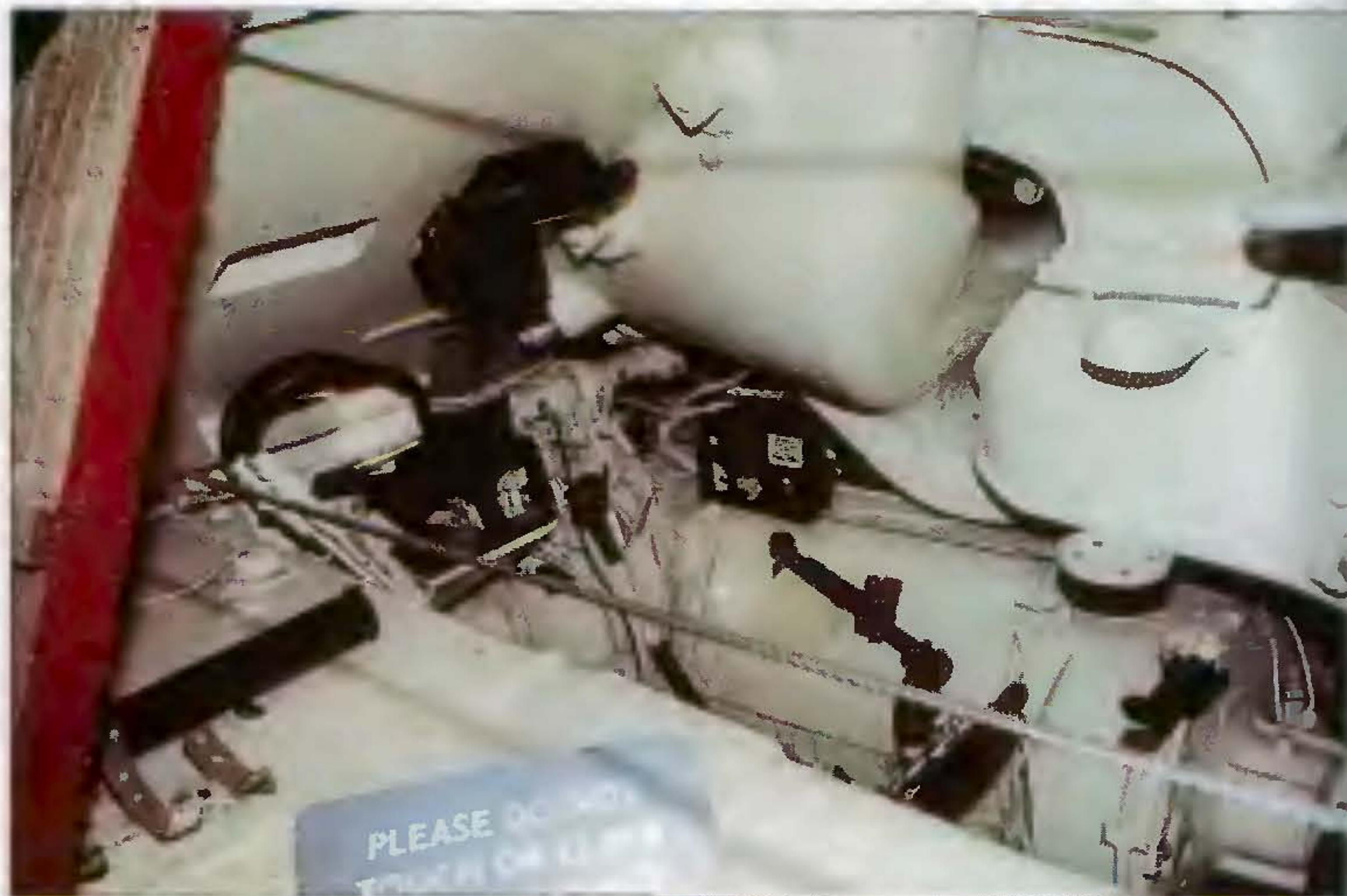
Left, top. A gun elevation wheel, gunner's position.

Left, middle. Right front corner of fighting compartment. Note commander's and loader's hatches.

Left. Radio set base (far left) and ammo rack. [WJG]

Above, top. Driver's position, left to right, hand brake, steering lever (grip is below), accelerator, clutch, foot brake pedal (almost hidden). Right gear box with gear lever on driver's right. In the foreground is a driver's seat base. [WJG]

Above. Ammo rack. [WJG]



Top, left and top, right. Driver's position, left to right, hand brake, steering lever (grip is below), accelerator, clutch, foot brake pedal (almost hidden). Right gear box with gear lever on driver's right. In the foreground is a driver's seat base.

Above. Fighting compartment. In the right a FUG 8 long-range radio set base.

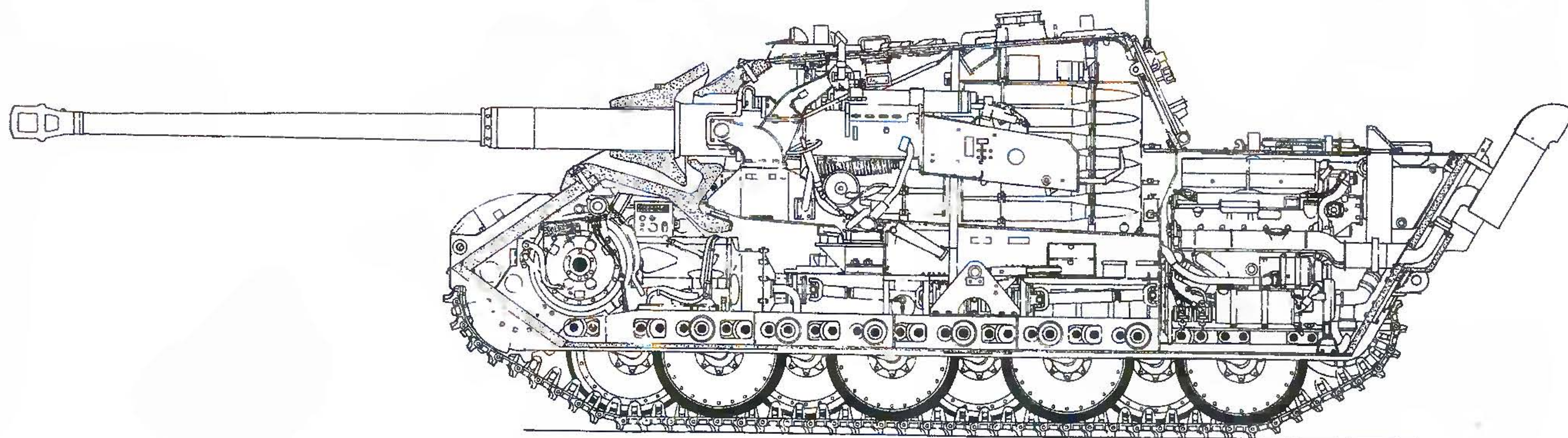
Left and left, middle. Details of Cardan shaft. [WJG]



Gunner's seat and 8.8 Pak 43/2 L/71 gun.



A general view of commander's and gunner's position.





Above and below. Two photos of “Jagpanther” SP gun, Bovington Tank Museum, Wareham, Dorset, England, It was number thirteen of a small batch of “Panther” tanks and “Jagdpanther” built by 823rd Armoured Troop Workshop, in Germany in 1945 for trials in Britain. Chassis number 303101 of MNH factory in Hanover. Vehicle has the late production idler wheels, gun mantlet and engine deck.

Above. Underside view of road wheels, torsion bars and hull. Below. Details of front armour and sprocket wheel and final drive gear housing.





Panzerjäger für 8.8 cm Pak 43 auf Fgst PzKpfw V "Jagdpanther" Sd Kfz 173 of 654th schwere Heeres Panzerjäger Abteilung, Grafenwöhr proving ground, Germany, September 1944.



Panzerjäger für 8.8 cm Pak 43 auf Fgst PzKpfw V "Jagdpanther" Sd Kfz 173 of 130th Panzer Lehr Division, Hungary, March 1945.



Panzerjäger für 8.8 cm Pak 43 auf Fgst PzKpfw V "Jagdpanther" Sd Kfz 173, unit unidentified, Eastern Front, 1945.



Panzerjäger für 8.8 cm Pak 43 auf Fgst PzKpfw V "Jagdpanther" Sd Kfz 173 of Führer Grenadier Brigade of Panzer Grenadiere Division "Großdeutschland", end 1944.



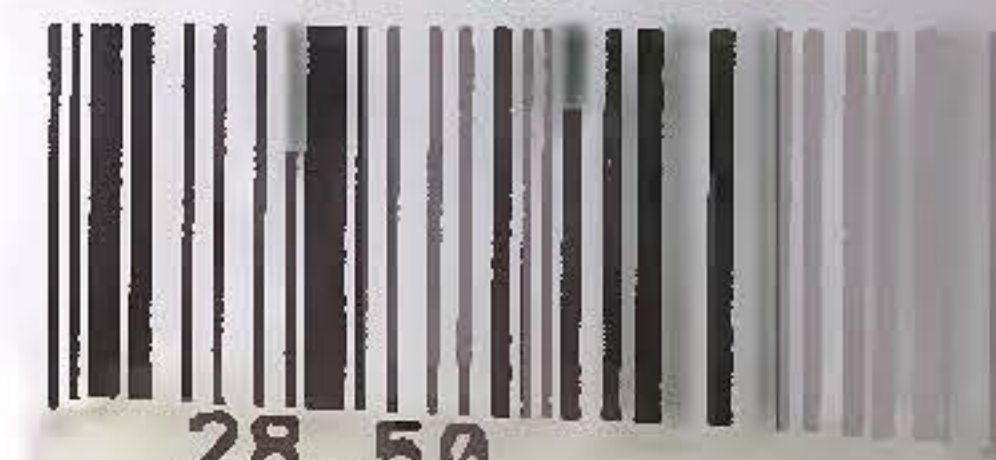
Panzerjäger für 8.8 cm Pak 43 auf Fgst PzKpfw V “Jagdpanther” Sd Kfz 173, unit unidentified, Germany, Spring 1945.



Panzerbefehlswagen “Jagdpanther” Sd Kfz 173 of 559th schwere Heeres Panzerjäger Abteilung, Belgium, September 1944.



ISBN 837219088-7



28.50



9 Jagdpanther 28c